

FIRECHIEF® FLAT-PACK SINGLE & DOUBLE FIRE EXTINGUISHER STANDS

FIRECHIEF®
making the world a safer place

MODEL:

FPSB1 / FPSB2

FPSR1 / FPSR2

FPSC1 / FPSC2



FPSB1
107-2057

FPSB2
107-2058



FPSR1
107-2059

FPSR2
107-2060



FPSC1
107-2061

FPSC2
107-2062

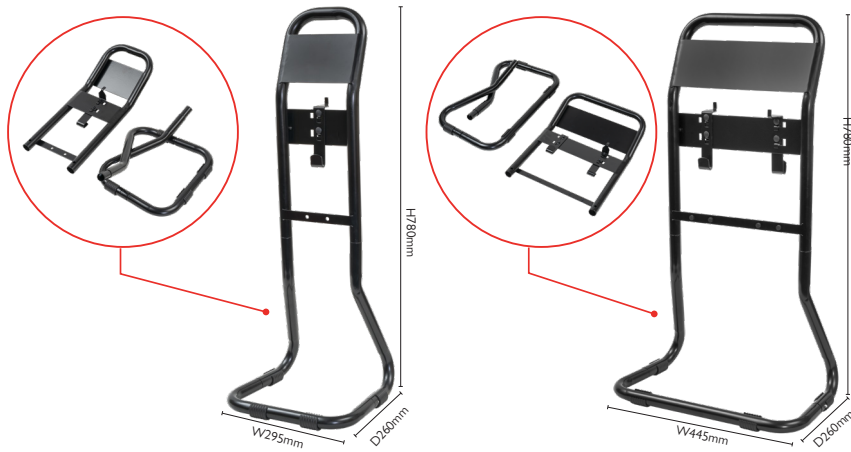
- Flat-pack frame construction
- Lightweight for easy installation
- Supplied with multiple bracket kit
- Finished in black, red and chrome
- Modern tubular design
- Magnetic sign fixing kit included
- Available in single and double versions

FIRECHIEF® FLAT-PACK SINGLE & DOUBLE FIRE EXTINGUISHER STANDS



Fire safety is essential, and our flat-pack fire extinguisher stand is the perfect way to keep your fire extinguisher safe and accessible in an emergency. This stylish, compact and durable stand is easy to install and comes with a multiple bracket kit to ensure compatibility with a wide range of fire extinguisher sizes. It is available in black, red and chrome to complement any décor, and the modern tubular design adds a touch of sophistication. The flat-pack design makes this stand easy to transport and store.

MODEL:
FPSB1 / FPSB2
FPSR1 / FPSR2
FPSC1 / FPSC2



Specifications

Model	FPSB1	FPSR1	FPSC1	FPSB2	FPSR2	FPSC2
Product Code	107-2057	107-2059	107-2061	107-2058	107-2060	107-2062
Colour	Black	Red	Chrome	Black	Red	Chrome
Assembled dimensions (mm)	W295 x H780 x D260			W445 x H780 x D260		
Packaged dimensions (mm)	W490 x H85 x D190			W490 x H75 x D335		
Outer Carton Quantity	5			5		
Weight (kg)	2.8			3.5		

Imported into EU by: Firechief® Global (EU) Ltd, 3rd Floor, 40 Mespil Road, Dublin 4, D04 C2N4, Ireland

For more information contact: Firechief® Global, 3 Lands End Way, Oakham, Rutland, LE15 6RB, UK | UK: 0330 999 0019 | International: +44 (0)1572 772657 | www.firechiefglobal.com/contact-us/

+44 (0) 330 999 0019

sales@firechiefglobal.com

firechiefglobal.com