

Product Data Sheet

Astro PFP Pipe Closer

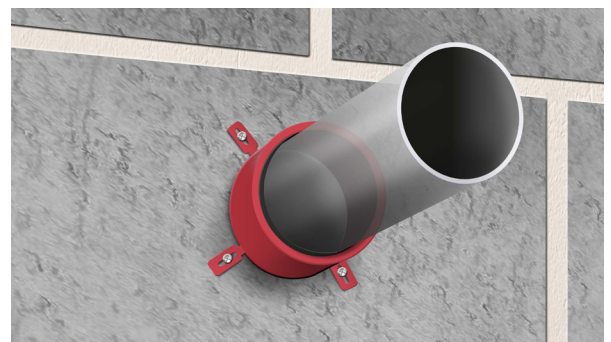
Revision 3 - 31st October 2019



Astro PFP Pipe Closer

CE Marked Intumescent Pipe Closer

- CE Marked.
- For pipe sizes from smallest pipes available to Ø315 mm with a wide range of pipe wall thicknesses.
- Smaller pipes can be fitted within larger closers with the benefit of accommodating pipes that are at an angle or if the opening around the pipe is too large.
- Fire classifications up to 240 minutes for both integrity and insulation.
- Certified for PVC-U, PVC-C, PE, LDPE, MDPE, HDPE, ABS, SAN+PVC and PP and a wide range of composite plastic pipes.
- Tested and certified for U/U pipe end applications.
- Classified for fire sealing in all types of constructions.
- Excellent sound insulation.
- No emissions - environmentally and user friendly.
- Unlimited storage time (under correct conditions).
- 30 years working life guarantee.



Product Description

Astro PFP Pipe Closer are designed to maintain the fire resistance of fire rated walls and floors where these are breached by continuous plastic pipes. Astro PFP Pipe Closer can be used in gypsum, masonry and concrete walls and with concrete floors.

Each pipe closer consists of a Red/Silver coated circular steel shell that splits in two to fit around the service penetrations by means of a simple 'slide-lock' system.

The steel shell contains a graphite based reactive material which reacts when exposed to heat closing the openings left by the softening plastic pipe in fire.

Product Description

When testing pipes, one can choose not to cap (or close) the pipe, or cap the pipe inside the furnace, or outside the furnace, or on both sides. The configuration chosen depends on the intended application of the pipe and/or the installation environment. The code defining if a pipe is capped is stated after the fire classification. For instance, EI 60 C/U which means the pipe was capped inside the furnace, and uncapped outside the furnace. The test configuration defines the approvals possible.

Our engineering judgment based on EN 1366-3:2009 are:

| Intended use of pipe | | Pipe end condition ⁴⁾ |
|--|--------------------|----------------------------------|
| Rainwater pipe, plastic | At drainage | U/U ¹⁾ |
| | Not at drainage | C/C ²⁾ |
| Drainage or sewage pipe, plastic | Ventilated drain | U/U ¹⁾ |
| | Unventilated drain | U/C ¹⁾ |
| | Drain w/water trap | U/C ¹⁾ |
| | Not at drainage | C/C ²⁾ |
| Pipe in closed circuit (water, gas, air, electricity etc.) | | C/C ^{2) 3)} |
| Flue gas recovery system pipe, plastic | | U/C ¹⁾ |
| Pipe with open ends and ≥ 50 cm length on both sides, plastic | | U/U ²⁾ |
| Pipe supported by suspension system, metal | Fire rated support | C/U ¹⁾ |
| | Non-fire rated | U/C ¹⁾ |
| Waste disposal shaft pipe, metal | | U/C ¹⁾ |

¹⁾ Suggested in EN 1366-3:2009. ²⁾ Judgment based on tests.

³⁾ Metal pipes should have fire rated support. ⁴⁾ U/U classified fire seals cover C/U, U/C and C/C. C/U classified fire seals cover U/C and C/C. U/C classified fire seals cover C/C.

| Technical Data | |
|-------------------------------|--|
| Condition | Ready for use, steel shell with a graphite material |
| Shell | Powder coated 1mm steel |
| Conditioning procedure | EN 13238:2010 |
| Expansion ratio | 17:1 |
| Expansion pressure | 65.4 N |
| Graphite weight | 1.4 kg/m ² per mm thickness |
| Graphite density | 1409 kg/m ³ |
| Normal expansion time | Less than 2 minutes |
| Minimum expansion temperature | 105 °C |
| Durability | Z ₂ intended for use in internal conditions with humidity classes other than Z ₁ , excluding temperatures below 0°C. |
| Life | Under normal conditions; 30 years + |
| Storage | May be stored for a long period of time. To be stored in temperatures between 5°C and 30°C |
| Installation temp. | +5°C to +50°C (sealant) |
| Colour | Red/Stainless Steel shell with anthracite inlay |

Sound insulation

| Description | Sound reduction |
|---|-----------------|
| Closers installed as described in walls | RW 58 dB |

The sound insulation value is only valid for the closer/pipe and not for other elements in the building construction. The sound insulation has been tested by the accredited laboratory Exova BM Trada in Great Britain according to EN ISO 10140-2. Test report is available upon request.

Product Availability

| Product Code | Product Description | Size |
|--------------|---|-------|
| AFPFPPC32 | Astro PFP Pipe Closer: 32mm (Depth 50mm) | 32mm |
| AFPFPPC40 | Astro PFP Pipe Closer: 40mm (Depth 50mm) | 40mm |
| AFPFPPC55 | Astro PFP Pipe Closer: 55mm (Depth 50mm) | 55mm |
| AFPFPPC63 | Astro PFP Pipe Closer: 63mm (Depth 50mm) | 63mm |
| AFPFPPC75 | Astro PFP Pipe Closer: 75mm (Depth 50mm) | 75mm |
| AFPFPPC82 | Astro PFP Pipe Closer: 82mm (Depth 50mm) | 82mm |
| AFPFPPC90 | Astro PFP Pipe Closer: 90mm (Depth 50mm) | 90mm |
| AFPFPPC110 | Astro PFP Pipe Closer: 110mm (Depth 50mm) | 110mm |
| AFPFPPC125 | Astro PFP Pipe Closer: 125mm (Depth 60mm) | 125mm |
| AFPFPPC140 | Astro PFP Pipe Closer: 140mm (Depth 60mm) | 140mm |
| AFPFPPC160 | Astro PFP Pipe Closer: 160mm (Depth 60mm) | 160mm |
| AFPFPPC200 | Astro PFP Pipe Closer: 200mm (Depth 75mm) | 200mm |
| AFPFPPC250 | Astro PFP Pipe Closer: 250mm (Depth 75mm) | 250mm |
| AFPFPPC315 | Astro PFP Pipe Closer: 315mm (Depth 75mm) | 315mm |

To Order & Specify

Please contact us and quote the following information - Quantity / Product Code / Product Description / Size
 Typical example:- 10 / AFPFPPC110 / Astro PFP Pipe Closer / 110mm

>> Tel: [01329 844 500](tel:01329844500) or >> Email: sales@astroflame.com

Installation

Please see installation sheet - This can be requested from our sales team T: [01329 844 500](tel:01329844500)
 or E: sales@astroflame.com

Health and Safety

Please see (SDS) Safety Data sheet - This can be requested from our sales team T: [01329 844 500](tel:01329844500)
 or E: sales@astroflame.com

As part of our policy of ongoing improvements, we reserve the right to modify, alter or change product specifications without giving notice. Product illustrations are representations only. All information contained in this document is provided for guidance only, and as ASTROFLAME FIRESEALS LTD has no control over the installation methods of the products, or of the prevailing site conditions, no warranties expressed or implied are intended to be given as to the actual performance of the products mentioned or referred to, and no liability whatsoever will be accepted for any loss, damage or injury arising from the use of the information given of products mentioned or referred to herein.

The above information to the best of our knowledge is true and accurate and based upon current test data and is supplied for your guidance only. Customers should satisfy themselves to the suitability of the product in its intended use and no guarantee is given or implied since the conditions of actual use are beyond our control. ASTROFLAME FIRESEALS LTD, disclaim any liability for loss, damage or other expense arising from the use of information, data or products mentioned or referred to and reserve the right to change any details or specifications without notice.