

Product Data Sheet

Astro PFP FR EX Mortar

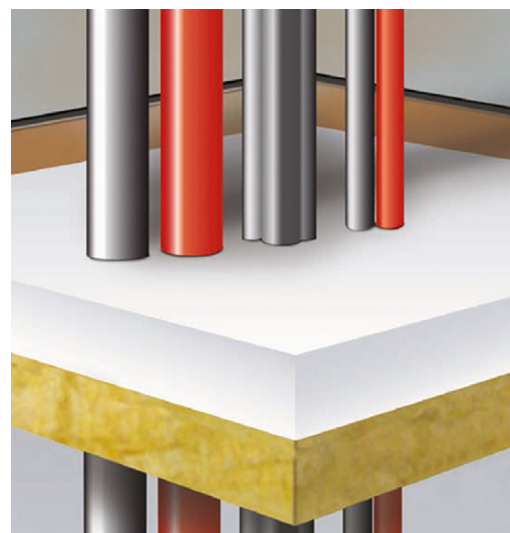
Revision 2 - 12th November 2020



Astro PFP FR EX Mortar

Fire Resistant Mortar

- Classified in walls and floors of concrete, brick, gypsum etc.
- Suitable for cables, bundled cables, cable racks, cable trays, steel, copper, alupex and plastic pipes.
- Simple to apply leaving a very smooth finish.
- High degree of mechanical resistance; the seal is load bearing without reinforcement.
- No priming necessary prior to application in most building material substrates however metal services in contact with the seal must be corrosion protected.
- Suitable for most surfaces, included concrete, bricks, Leca, steel, plastic etc, but not suitable to fitting of doors or in service openings that involve movement.
- The product is certified for use in walls but it is recommended to use PFP FR Boards for these applications.
- Fully set within 1 hour.
- The fire performance specification of the compound has been derived when the seal has been left to cure for 1 month.
- Nearly unlimited storage time.



Product Description

Astro PFP FR EX Mortar is a dry white powder consisting of inorganic compounds and perlite.

When mixed with water, the compounds form a highly thermally insulating fire sealing compound to prevent the spread of fire and smoke through openings in fire rated walls and floors, including openings formed around building service penetrations.

Astro PFP FR EX Mortar will also maintain the acoustic design performance in walls and floors. Astro PFP FR EX Mortar expands approx. 1% by hydraulic action during curing ensuring a very tight seal around the service penetrations and the surrounding opening apertures.

Astro PFP FR EX Mortar is easy to sand or drill. The compound dries to an off-white colour which may be painted.



Astroflame Fireseals Ltd
Unit 8 I.O Centre
Stephenson Road
Segensworth, Fareham
Hampshire, PO15 5RU
20
CE-0843-CPR-0559

ETA - 20/0199
EAD 350454-00-1104
ASTRO PFP
FR EX MORTAR
" See ETA - 20/0199 for
Relevant characteristics

Sound Insulation

Description	Sound Reduction
Single sided cast ≥ 50 mm thick as linear seal	Rw 64 dB
Double sided cast ≥ 25 mm thick as linear seal	Rw 64 dB
Single sided cast ≥ 50 mm thick as large seal	Rw 48 dB
Double sided cast ≥ 25 mm thick as large seal	Rw 48 dB

Astro PFP EX Mortar has been tested at BM Trada (UKAS accredited); according to EN ISO 10140-2:2010.

Resistance to Fire

Construction	Description	Classification
Flexible walls comprise gypsum, masonry, aerated concrete or concrete	Up to 2400 mm wide by 1200 mm high blank seal with double sided 25mm Astro PFP FR EX Mortar on 25mm cast board	EI 120 (E 120)
Rigid walls comprise masonry, aerated concrete or concrete, within walls or between the head of walls and the soffit of floor slabs	Up to 2400 mm wide by 1200 mm high blank seal with single sided 50mm Astro PFP FR EX Mortar on 50mm cast board	EI 120 (E 180)
	Up to 2400 mm wide by 1200 mm high blank seal with single sided 100mm Astro PFP FR EX Mortar	EI 240 (E 240)
Rigid floors comprise aerated concrete or concrete within floors or between floors and walls	Up to 2400 mm by 1200 mm blank seal with 50mm Astro PFP FR EX Mortar on top of 50mm cast board	EI 180 (E 180)
	Up to 2400 mm by 1200 mm blank seal casted with 100mm Astro PFP FR EX Mortar	EI 240 (E 240)

The cast board comprise stone wool with density $\geq 150\text{kg/m}^3$.

Please read the Installation Instructions before usage.

Additional Aperture Sizes in Floors

Under EN 1366-3 rules, results from tests in floors with a penetration seal length of minimum 1m apply to any length as long as perimeter length to seal area ratio is not smaller than that of the test specimen. The following aperture sizes are therefore allowed where 2400 x 1200 mm is described in this data sheet and in the installation instructions.

Maximum Aperture Sizes within Floors or between Floors and Walls Sound Reduction
1200 mm width x 2400 mm length (tested)
1100 mm width x 2900 mm length
1000 mm width x 4000 mm length
900 mm width x 7000 mm length
≤ 800 mm width x ∞ (infinite) length

Additional Aperture Sizes in Floors

Astro PFP FR EX Mortar has been subject to concentrated load and impact tests in floors according to ETAG 026-2 and EOTA TR001 Clause 2. The tests were conducted on the minimum allowed cast depth of 100mm.

According to the loading limits in the table below, reinforcement is not necessary, however it is highly recommended that the edges of the aperture are brushed free of any dust or loose particles and that any contamination is washed away using clean water. Moistening the edges well before casting will improve adhesion. Astro PFP FR EX Mortar should not be cast in surface treated concrete. The mortar must be mixed to a thick but fluid mass at a rate of approx. 2 parts of powder to 1 part water. Maximum loadbearing performance will be achieved 28 days after casting. Test results:

Test in 1500x1000mm frame	Results
Soft body impact, serviceability	500Nm
Soft body impact, safety in use	700Nm
Hard body impact, serviceability	6 Nm
Hard body impact, safety in use	10 Nm
Concentrated load to ETAG 26-2	15 kN

Curing Times

Application	Temperature	Cure time
For filler 3.5 to 1 mix	0 °C	19 minutes
	10 °C	18 minutes
	20 °C	17 minutes
	30 °C	16 minutes
	40 °C	15 minutes
For casting 2 to 1 mix	0 °C	40 minutes
	10 °C	35 minutes
	20 °C	30 minutes
	30 °C	25 minutes
	40 °C	20 minutes

Astro PFP FR EX Mortar was mixed with an electric mixer for 90 seconds with a 100mm diameter paddle. Note the greater the sheer/agitation generated in the mixing process the quicker the mortar will set. Astro PFP FR EX Mortar is designed to be a quick curing system for professional installers where fast application times is of the highest importance. For slower cure, a retardant can be added to the dry mortar powder (sold separately).

Emission Data (indoor air quality)

Application	Temperature	Cure time
TVOC	12 µg/m ³	< 5 µg/m ³
TSVOC	n.d.	< 5 µg/m ³
VOC w/o NIK	n.d.	< 5 µg/m ³
R Value	n.d.	< 1
Formaldehyde	7.1 µg/m ³	n.d.
Acetaldehyde	< 3 µg/m ³	n.d.
Sum for+ace	< 0.006 ppm	n.d.
Carcinogenic	< 1 µg/m ³	< 1 µg/m ³
n.d. or < means not detected		

Astro PFP FR EX Mortar complies with the requirements of GEV and the results correspond to the EMICODE emission class EC 1^{PLUS} which is the best possible environmental and indoor hygiene health protection mark. Tested by Eurofins Product Testing, report number G12874B.

Pipe end configurations

When testing pipes, one can choose not to cap (or close) the pipe, or cap the pipe inside the furnace, or outside the furnace, or on both sides. The configuration chosen depends on the intended application of the pipe and/or the installation environment.

The code defining if a pipe is capped is stated after the fire classification. For instance EI 60 C/U which means the pipe was capped inside the furnace, and uncapped outside the furnace. The test configuration defines the approvals possible.

Our engineering judgment based on EN 1366-3:2009 are:

Intended use of pipe		Pipe end condition ⁴⁾
Rainwater pipe, plastic	At drainage	U/U ¹⁾
	Not at drainage	C/C ²⁾
Drainage or sewage pipe, plastic	Ventilated drain	U/U ¹⁾
	Unventilated drain	U/C ¹⁾
	Drain w/water trap	U/C ¹⁾
	Not at drainage	C/C ²⁾
Pipe in closed circuit (water, gas, air, electricity etc.)		C/C ^{2) 3)}
Flue gas recovery system pipe, plastic		U/C ¹⁾
Pipe with open ends and ≥ 50cm length on both sides, plastic		U/U ²⁾
Pipe supported by suspension system, metal	Fire rated support	C/U ¹⁾
	Non-fire rated	U/C ¹⁾
Waste disposal shaft pipe, metal		U/C ¹⁾

¹⁾ Suggested in EN 1366-3:2009. ²⁾ Astroflame's judgment based on tests.

³⁾ Metal pipes should have fire rated support. ⁴⁾ U/U classified fire seals cover C/U, U/C and C/C. C/U classified fire seals cover U/C and C/C. U/C classified fire seals cover C/C.

Technical Data

Condition	Powder ready for mixing with water
Product consumption at 2:1 mix	Approx. 3.42 bags per m ² @ 50mm depth Approx. 6.83 bags per m ² @ 100mm depth
Dry density	About 900 kg/m ³ after full cure
Flash point	None
Reaction to fire	Class A1 according to EN 13501-1
Hardened	Less than 1 hour depending on the local climate
Totally hardened	Up to 30 days depending on thickness and temp.
Flexibility	None
Durability/service	Class Z ₂
Thermal conduct.	0.051 W/mK
Working life	30 years
Storage	No particular limit for unopened bags in dry places with storage temperatures between 5°C and 30°C
Compatibility	Suitable for use with most materials, but should not be used in direct contact with metals that may corrode
Limitations	Should not be used in permanently damp areas or in moving joints
Classification	CE-marked – Fire seal for fire rated openings and penetrations class EI 240
Colour	Off white

Availability

Product Code	Product Description	Colour	Sizes
AFPFPEXMB	Astro PFP FR EX Mortar- Bags	Off-White	20 L

10 L pail also available P.O.A

To Order & Specify

Please contact us and quote the following information - Quantity / Product Code / Product Description / Size
Typical example:- 25 / AFPPEXMB / Astro PFP FR EX Mortar- Bags / 20 L

>> Tel: [01329 844 500](tel:01329 844 500) or >> Email: sales@astroflame.com

Installation

Please see installation sheet - This can be requested from our sales team T: [01329 844 500](tel:01329 844 500)
or E: sales@astroflame.com

Health and Safety

Please see (SDS) Safety Data sheet - This can be requested from our sales team T: [01329 844 500](tel:01329 844 500)
or E: sales@astroflame.com

As part of our policy of ongoing improvements, we reserve the right to modify, alter or change product specifications without giving notice. Product illustrations are representations only. All information contained in this document is provided for guidance only, and as ASTROFLAME (FIRE SEALS) LTD has no control over the specific application or installation methods of the products, or of the prevailing site conditions, no warranties expressed or implied are intended to be given as to the actual performance of the products mentioned or referred to, and no liability whatsoever will be accepted for any loss, damage or injury arising from the use of the information given of products mentioned or referred to herein.

The above information to the best of our knowledge is true and accurate and based upon current test data and is supplied for your guidance only. Customers should satisfy themselves to the suitability of the product based on the products limitation of applications and that the product is fit for purpose for their intended use and no guarantee is given or implied since the conditions of actual use are beyond our control. ASTROFLAME (FIRE SEALS) LTD, disclaim any liability for loss, damage or other expense arising from the use of information, data or products mentioned or referred to and reserve the right to change any details or specifications without notice. If you are in any doubt as to the suitability of this product for your intended application please contact our technical team on 01329 844500 or email sales@astroflame.com and we will contact you.